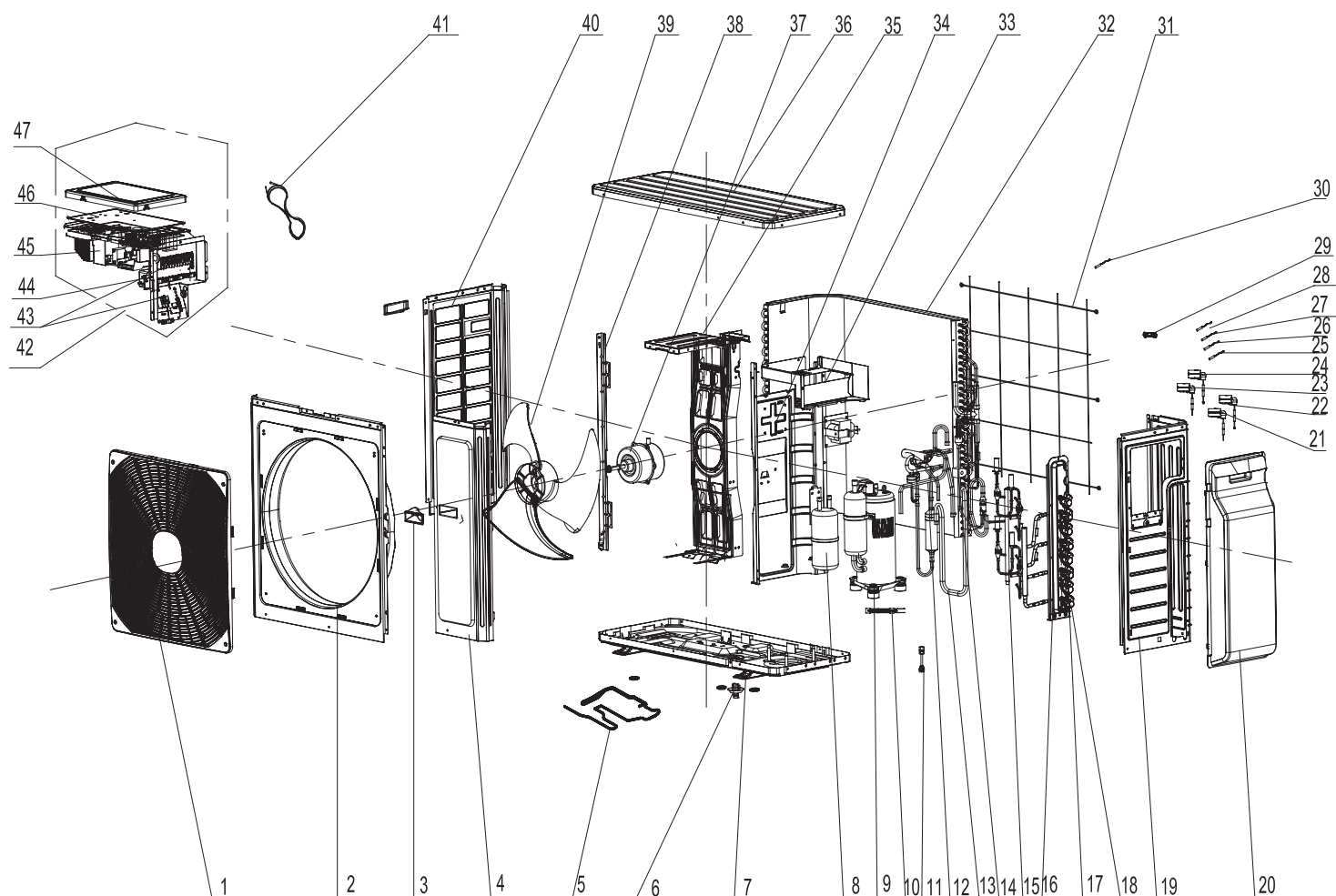


GWHD(36)NK6KO

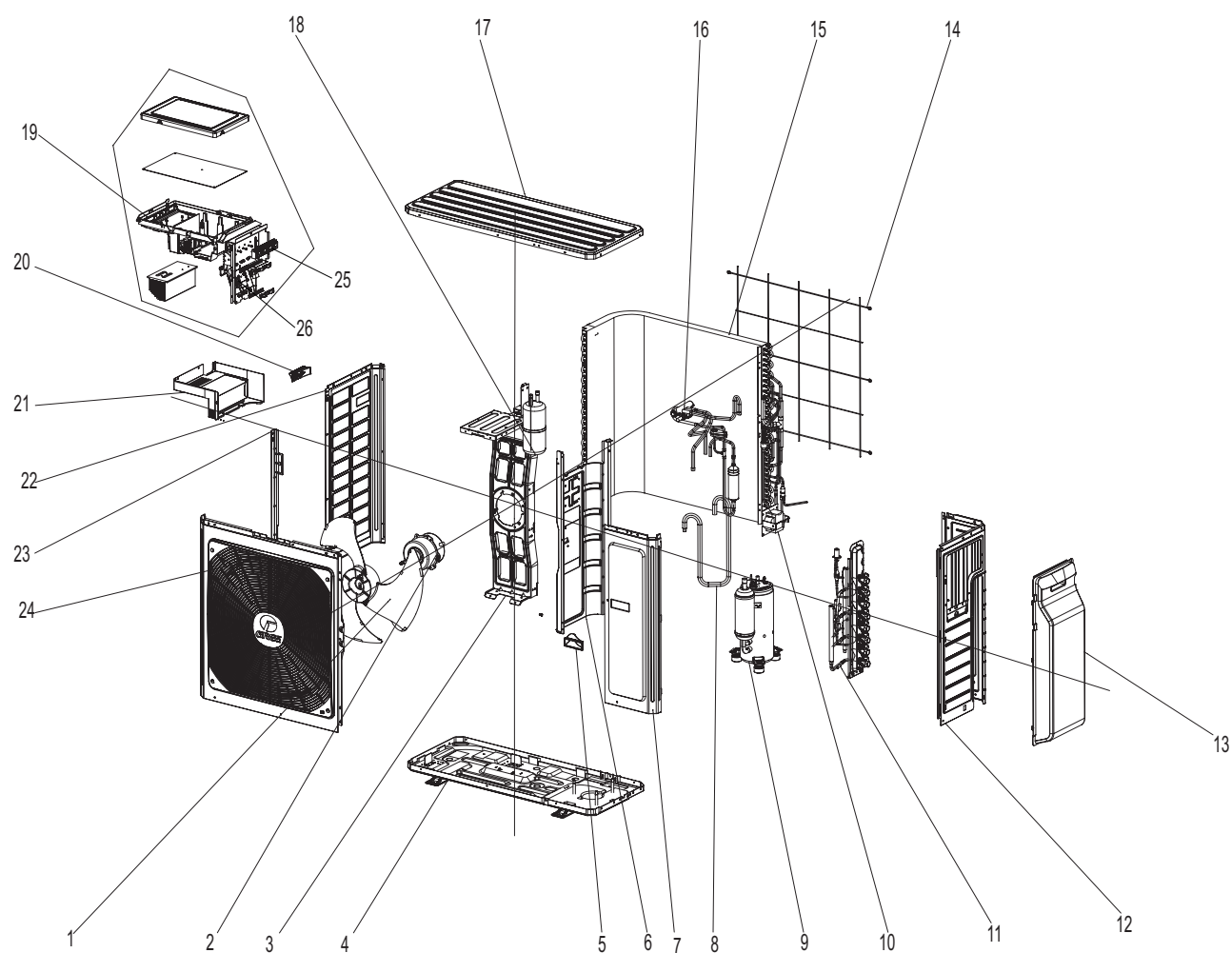


The component picture is only for reference; please refer to the actual product.

NO.	Description
1	Front Grill
2	Cabinet
3	Left Handle
4	Front Side Plate
5	Electrical Heater (Chassis)
6	Drainage Connector
7	Chassis Sub-assy
8	Gas-liquid Separator Assy
9	Compressor and Fittings
10	Electric Heater(Compressor)
11	Tube Connector Sub-assy
12	4-Way Valve Assy
13	Connection Pipe
14	Magnet Coil
15	Electronic Expansion Valve assy
16	Valve Support Assy
17	Cut off Valve
18	Cut off Valve
19	Right Side Plate
20	Valve Cover
21	Electric Expand Valve Fitting
22	Electric Expand Valve Fitting
23	Electric Expand Valve Fitting
24	Electric Expand Valve Fitting
25	Temperature Sensor
26	Temperature Sensor
27	Temperature Sensor
28	Temperature Sensor
29	Wiring Clamp
30	Temperature Sensor
31	Rear Grill
32	Condenser Assy
33	Electric Box (Fireproofing)
34	Clapboard Sub-Assy
35	Motor Support Sub-Assy
36	Coping
37	Fan Motor
38	Condenser Support Plate
39	Axial Flow Fan
40	Left Side Plate
41	Connecting Cable
42	Electric Box Assy
43	Terminal Board
44	Connection Support
45	Electric Box
46	Main Board
47	Electric Box Cover Sub-Assy

Above data is subject to change without notice.

GWHD(28)NK6KO

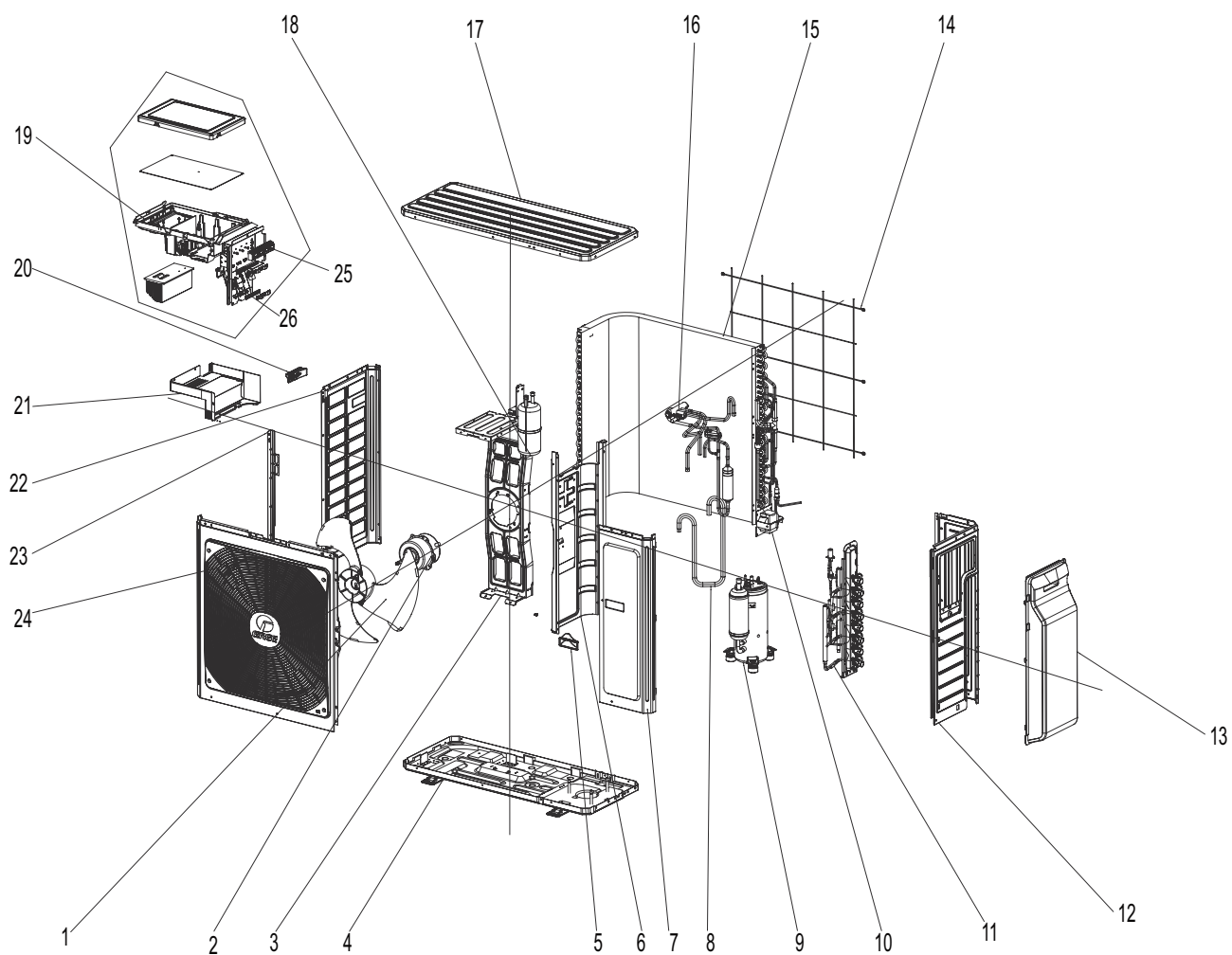


The component picture is only for reference; please refer to the actual product.

NO.	Description
1	Axial Flow Fan
2	Brushless DC Motor
3	Motor Support Sub-Assy
4	Chassis Sub-assy
5	Left Handle
6	Clapboard Sub-Assy
7	Front Side Plate
8	Inhalation Tube
9	Compressor and Fittings
10	PFC Inductance
11	Valve Support Assy
12	Right Side Plate Sub-Assy
13	Valve Cover
14	Rear Grill
15	Condenser Assy
16	4-Way Valve Assy
17	Top Cover Sub-Assy
18	Gas-liquid Separator Assy
19	Electric Box Assy
20	Handle
21	Electric Box (Fireproofing)
22	Left Side Plate
23	Condenser Support Plate
24	Front Panel Assy
25	Terminal Board
26	Terminal Board

Some models may not contain some parts,
please refer to the actual product.

GWHD(24)NK6KO



The component picture is only for reference; please refer to the actual product.

NO.	Description
1	Axial Flow Fan
2	Brushless DC Motor
3	Motor Support Sub-Assy
4	Chassis Sub-assy
5	Left Handle
6	Clapboard Sub-Assy
7	Front Side Plate
8	Inhalation Tube
9	Compressor and Fittings
10	PFC Inductance
11	Valve Support Assy
12	Right Side Plate Sub-Assy
13	Valve Cover
14	Rear Grill
15	Condenser Assy
16	4-Way Valve Assy
17	Top Cover Sub-Assy
18	Gas-liquid Separator Assy
19	Electric Box Assy
20	Handle
21	Electric Box (Fireproofing)
22	Left Side Plate
23	Condenser Support Plate
24	Front Panel Assy
25	Terminal Board
26	Terminal Board

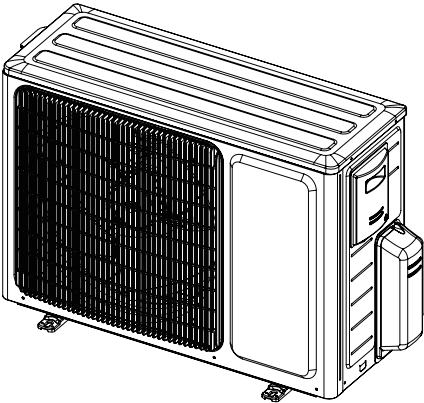
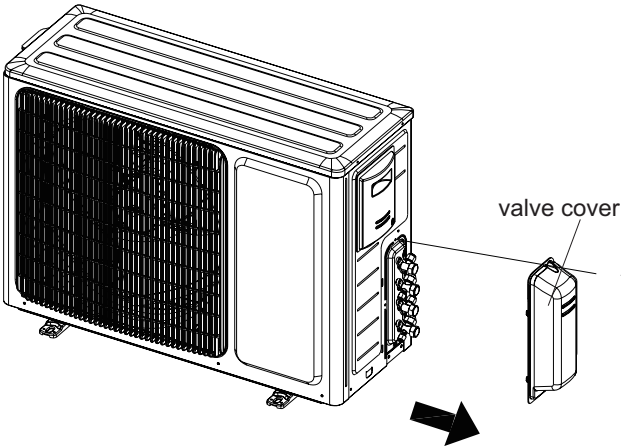
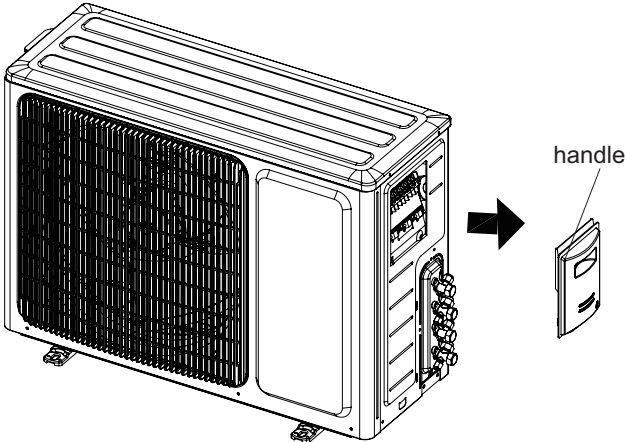
Some models may not contain some parts,
please refer to the actual product.

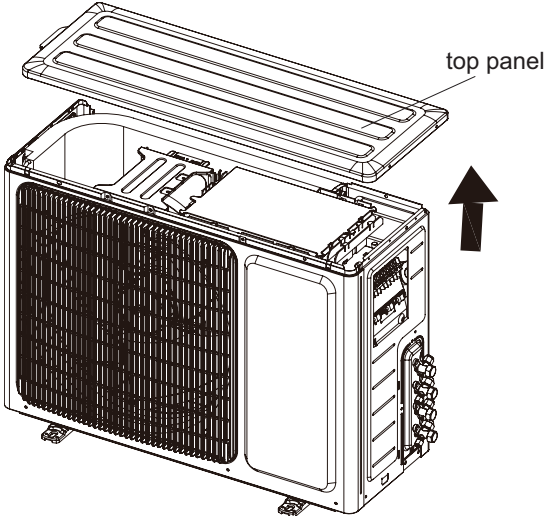
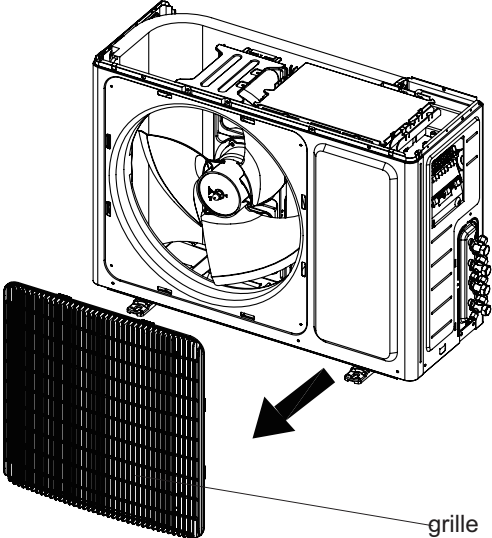
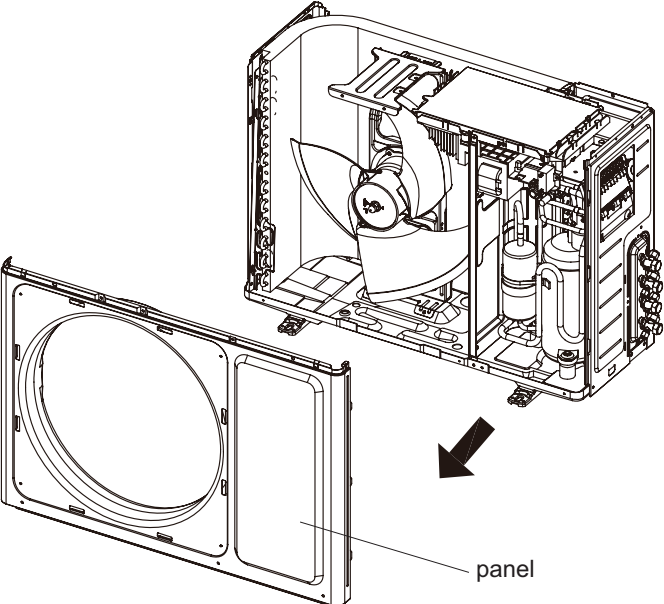
11. Removal Procedure

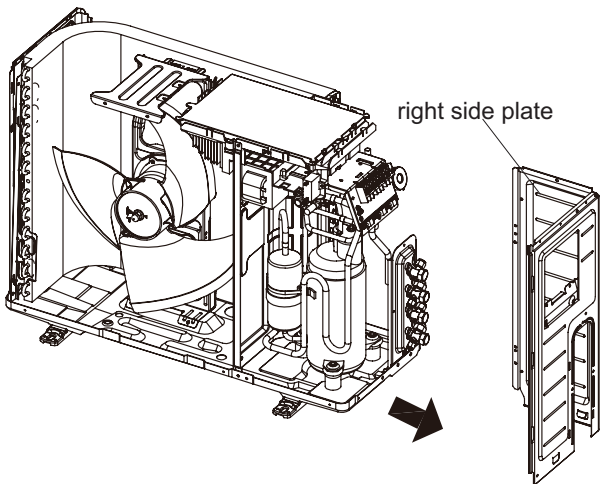
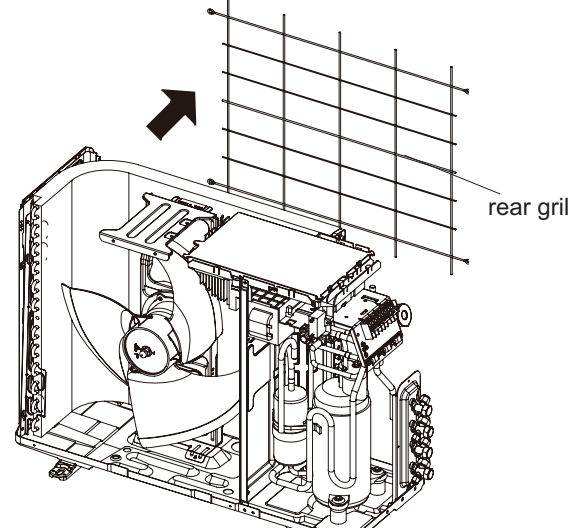
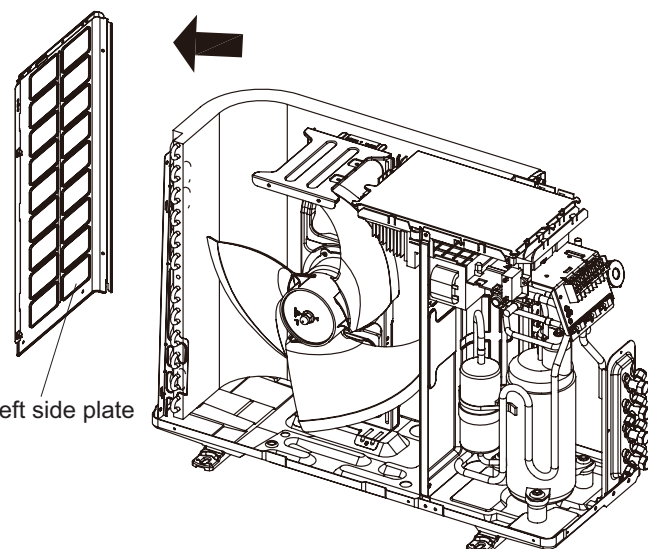


Warning: Be sure to wait for a minimum of 20 minutes after turning off all power supplies and discharge the refrigerant completely before removal.

18K

Steps	Procedure	
1. Before disassembly		
	Complete axonometric drawing.	
2. Remove valve cover		
	Remove the connection screw fixing the valve cover and then remove the valve cover.	
3. Remove handle		
	Remove the connection screw fixing the handle and the right side plate, and then remove the handle.	

Steps	Procedure	
4. Remove top panel	<p>Remove the connection screws connecting the top panel and the front panel, and then remove the top panel.</p>	
5. Remove front grille		
6. Remove front panel		

Steps	Procedure
<p>7. Remove right side plate</p> <p>Remove the screws connecting the right side plate with the chassis and the valve support. Then remove the right side plate.</p>	 <p>Diagram illustrating the removal of the right side plate. The right side plate is shown being detached from the main unit.</p>
<p>8. Remove rear grill</p> <p>Remove the screws connecting the rear grill and left side plate, and then remove the rear grill.</p>	 <p>Diagram illustrating the removal of the rear grill. The rear grill is shown being detached from the main unit.</p>
<p>9. Remove left side plate</p> <p>Remove the screws fixing the left side plate with the chassis and the condenser support, and then remove the left side plate.</p>	 <p>Diagram illustrating the removal of the left side plate. The left side plate is shown being detached from the main unit.</p>